

PH. Insulations Ltd

Clean Environment Installations

COMPANY PROFILE



Installations
Nationwide



P.H. Insulations Limited - Company Profile

Paul Howarth, Managing Director, established P.H. Insulations in July 1998 following many years experience in the industry. Paul commenced his training in the coldstore construction industry in 1971, as an apprentice joiner manufacturing walk in fridges and freezers and window displays mainly for installing into butchers shops and the like. At this time fridges and freezers were constructed from timber frameworks filled with insulation material and covered with a foodsafe covering.

Larger chill and coldstores, at that time predominantly for fruit, vegetable and meat markets, were constructed in a similar fashion but installed on site fixed within a conventionally built building of say brick or similar. The timber framework was fixed to the brick/blockwork, filled with insulation material to suit the application then covered with a foodsafe finish.

Major complexes for food storage and distribution were constructed in a number of small chambers, as it was not possible with the technology available to build the big depots in single chamber of the size we have today. This changed with the advent of the composite panels we now use in the construction of the depots, together with coldstores and food production facilities.

Paul Howarth continued his career working on the tools and became practised in the methodology of composite panel construction progressing to Site Manager in 1981 eventually to Contracts Manager to Director of two different companies before establishing P.H. Insulations Limited.

As a result, P.H. Insulations Limited have many years experience of providing hygienic environments and coldstorage facilities to the rigorous legislative requirements of the Food and Medical Industries. We have completed many successful contracts both large and small since our formation, utilising up to date plant and equipment and modern installation techniques to provide wall panelling and cladding together with "Walk On" ceilings to Production, Packaging and Storage areas. All installations are backed by our Professional Indemnity Insurance.

We are able to offer both internal and external cladding with a variety of core materials including Polystyrene, Polyurethane, PIR and Mineral wool.

In recent projects for food production facilities, mineral wool fibre cores have been a major consideration, being specified for non-combustible and fire rated applications to comfort the Building and Fire Authorities, not to mention Insurance Companies due to its excellent fire resistant and insulative qualities. P.H. Insulations are a major installer of this type of panel. The mineral wool core wall and ceiling panels we offer are able to maintain a fire resistance up to 4 hours for walls and 2 hours for ceilings.

We operate from a 5000ft² workshop, yard and offices, housing the latest CNC operated machinery for manufacturing the flashings and trims utilised in the installations we undertake.

We carry stocks of the most common steel sheet material for manufacture of flashings including white foodsafe laminate to match the panel surfaces, galvanised steel up to 2mm thickness for various channels and top hat strengtheners etc., stainless steel, colour coated steels and aluminium sheets normally used for protecting panels at low level. We also carry stocks of fixings, sealants, silicones, coving and angles.

We generally buy in the insulated panels and the majority of the doors we install, but do carry a small stock of insulated panels for use in emergency situations or if any of our customers require works carrying out at short notice or during shutdown periods.

As we have this facility, we can quickly supply to site any materials which may be required urgently due to unforeseen circumstances, which means if this occurs whilst carrying out works during out of normal working hours, we have access to anything we require 24hrs a day, 7 days a week from stock. We then deliver to site on our own transport, again as and when necessary at short notice. The obvious advantages of this are less down time on site whilst avoiding waiting for materials to be delivered from external sources, so ensuring continuity of works for us and following trades such as electricians and mechanical/refrigeration engineers etc.

We have a base of fully employed operatives, which are a mixture of skilled, semi-skilled and labourers and each site will have a supervisor appointed in charge of the works who is a trained and sensible operative capable of liaising with the customers appointed engineer/project manager.

Our Contracts Manager or I visit any and all sites regularly and any large or particularly awkward projects have a full time Site Supervisor/Manager.

When very busy or have large contracts running, like most companies we supplement our labour force with labour only sub-contractors. As I have been in the industry for many years, I have found that there are good and unfortunately bad sub-contractors and have been able to separate the good from the bad. We try to use sub-contractors as supplementary labour only and place them on sites with our own employees although this may not always be possible.

We treat sub-contractors as if fully employed, covered by our company insurance policies etc. and we provide all the Health & Safety documentation for them to work to, including the mandatory method statements and risk assessments and also set down the standard of quality they are expected to work to. As before our management regularly attends site and meetings to assess the works as they proceed, so sub-contractors are not left alone to carry out the works without supervision.

We are able to offer:

- Chill and Coldstores of any size (including fire rated)
- Fire rated and non-combustible panelworks (including the compartmentation of existing facilities)
- Fire rated and standard doors in a foodsafe finish
- Clean Rooms
- Cost effective external cladding with high insulative qualities
- Temperature controlled environments e.g. for computer installations
- Modular (butchers type) fridge's and freezers
- Sliding doors, manual and automatic operation
- Hinged doors of single and double action and thin blade crash doors.

We would be pleased to be included on your tender lists for any ongoing or future contracts you may be considering.

Should you require any further information, please contact us on
Tel: **0161-367-2390**
Fax: **0161-368-0215**
E-mail: **philt@btconnet.com**
and we will be pleased to offer any assistance we are able.

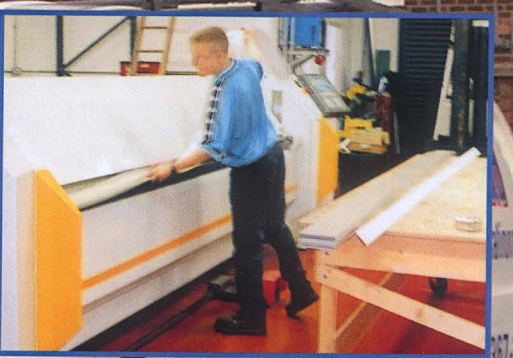


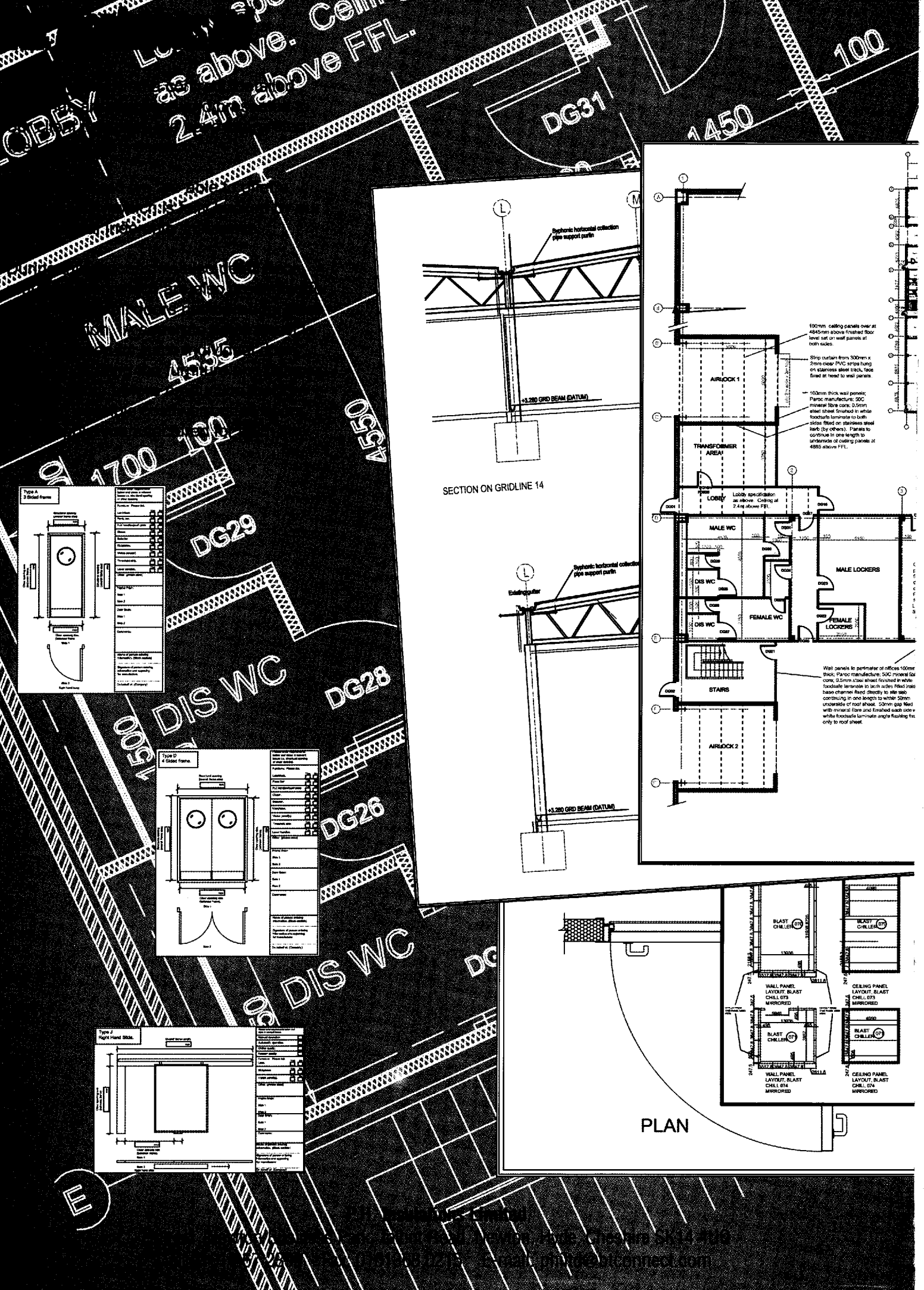
P.H. Insulations Ltd
Clean Environment Insulations

H1

P.H. Insulations Ltd
0161-367-2390

ML51 FLX





LC... as above. Ceiling 2.4m above FFL.

DG31

1450

100

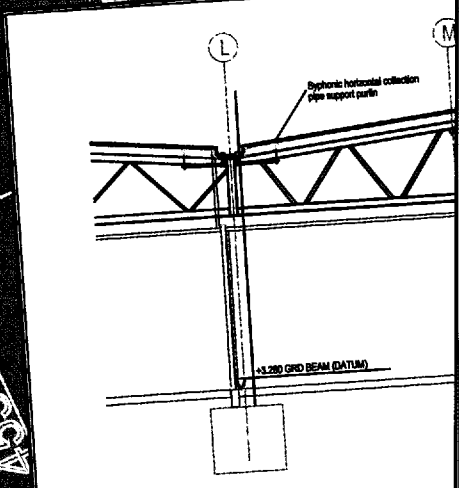
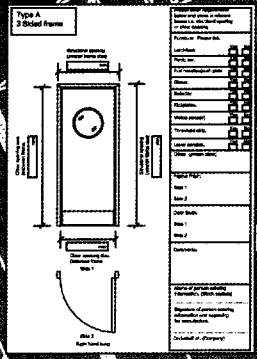
MALE WC

4535

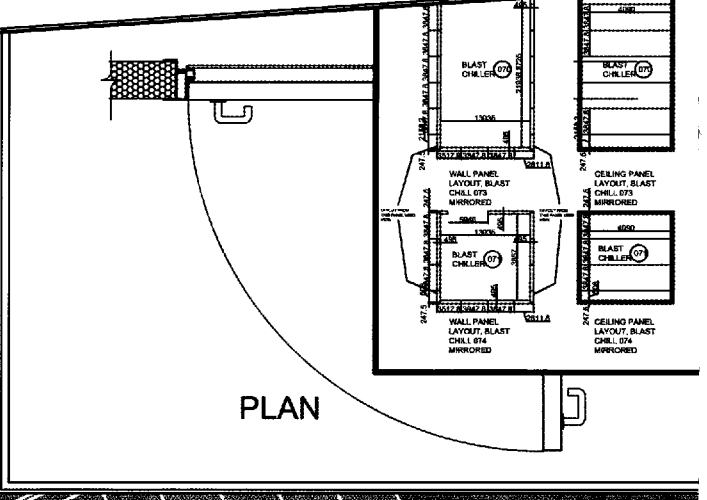
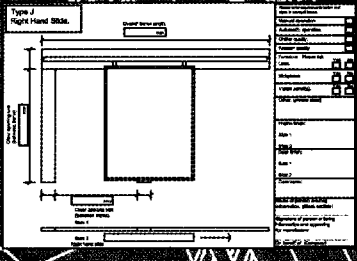
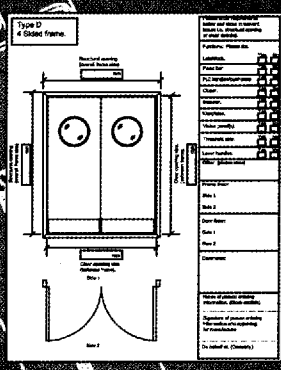
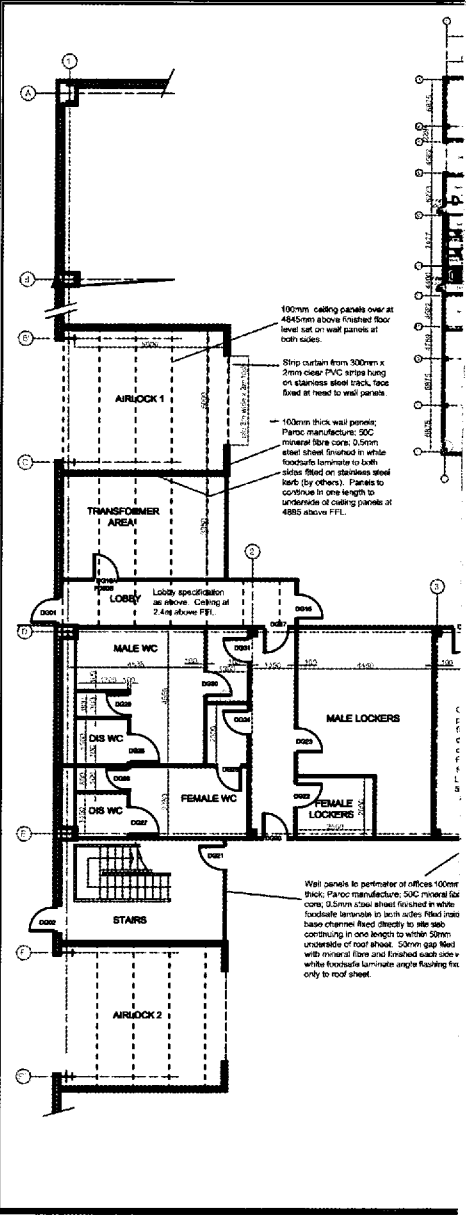
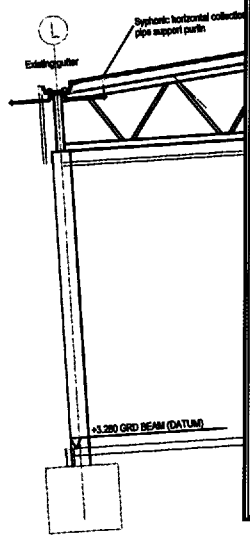
4550

1700 100

DG29



SECTION ON GRIDLINE 14



PLAN

E